

MONTHLY MEMBERSHIP PROGRESS REPORT

LOCATION ILLINOIS

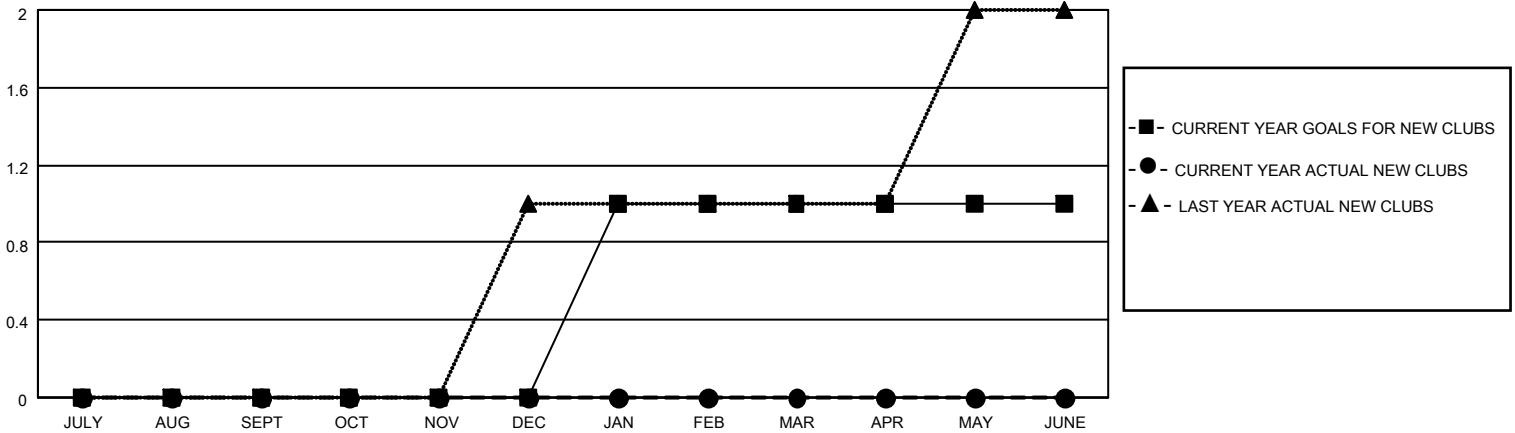
District 1 A

Results as of: 6/30/2023

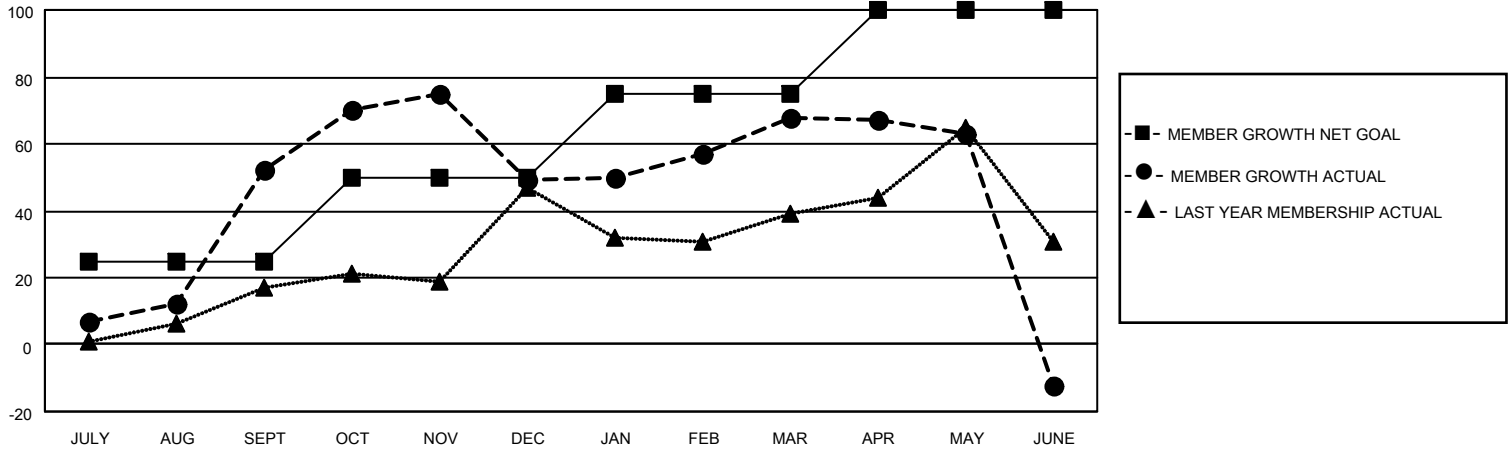
Clubs			
RESULTS FOR 2022-2023			
QUARTER	NEW CLUB GOAL	NEW CLUBS	DROPPED CLUBS
JULY/AUG/SEPT	0	0	0
OCT/NOV/DEC	0	0	0
JAN/FEB/MAR	1	0	0
APR/MAY/JUNE	0	0	0

Members			
RESULTS FOR 2022-2023			
QUARTER	MEMBER GROWTH NET GOAL	MEMBER GROWTH ACTUAL	DROPPED MEMBERS ACTUAL (including transfers)
JULY/AUG/SEPT	25	93	34
OCT/NOV/DEC	25	98	88
JAN/FEB/MAR	25	42	21
APR/MAY/JUNE	25	105	136

GOALS AND ACTUAL NEW CLUBS CUMULATIVE



GOALS AND ACTUAL MEMBERS CUMULATIVE



DROPPED CLUBS: 0

34 CLUBS OF 72 ADDED 1 OR MORE NEW MEMBERS

GENDER DISTRIBUTION

MALE	999 (55.87%)
FEMALE	789 (44.13%)
NON BINARY	0 (0.00%)
PREFER NOT TO ANSWER	0 (0.00%)

DROPPED MEMBERS

[CLICK HERE FOR CUMULATIVE MEMBERSHIP DATA](#)

DECEASED	23
CLUB CANCELLED	26
OTHER	230
TOTAL	279

TOTAL FAMILY UNIT MEMBERS	373
FAMILY MEMBERS PAYING HALF DUES	202